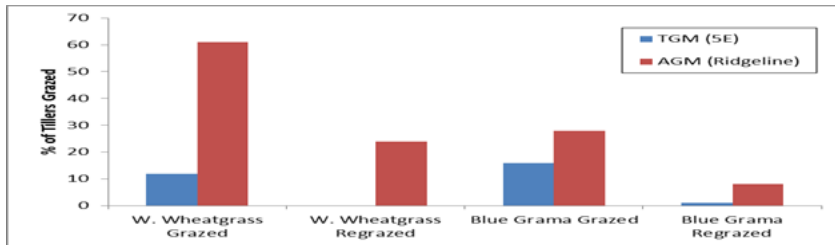


Good Day AGMers,

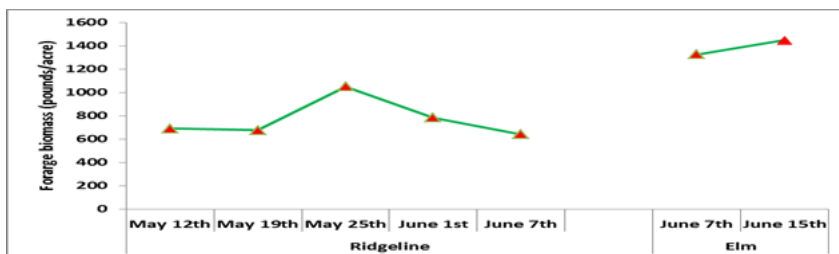
We are in full-tilt summer boogey-mode this week. The crews are working hard in the heat to measure vegetation and bird activity for the AGM experiment. In the spirit of transparency, though, we do have some documented monkey business to show you (see photos below). In the highlights section, be sure to check out some results of the western wheatgrass/blue grama monitoring and some weight gains from the grazing intensity experiment. We will be weighing the AGM steers on June 30<sup>th</sup> and I will do my best to get you those results ASAP.

### Highlights of Happenings:

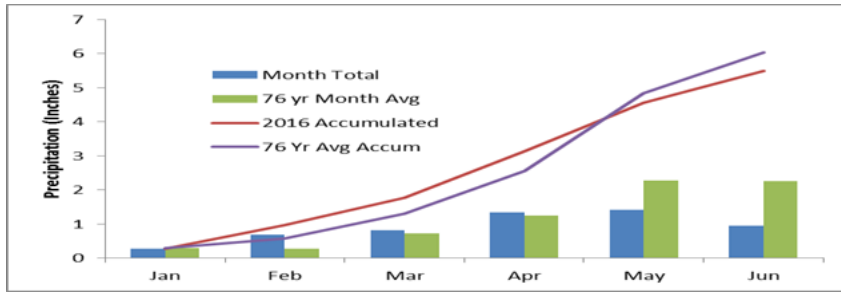
- **In the AGM pasture (Ridgeline) about 61% of PASM tillers and 28% of BOGR tillers got grazed.** In the TGM pasture (5E) during the same period (5/18 through 6/7), we saw grazing on 12% of PASM and 16% of BOGR tillers. In the TGM, almost none of the tillers had been regrazed yet as of 6/7/2016. In AGM, we had evidence of regrazing on 24% of PASM tillers (about 40% of those that got grazed at least once) and 8% of BOGR tillers (about 30% of those that got grazed at least once). Grazing on BOGR was just starting to pick up in both pastures in the early June sampling dates. See chart below.



- **Our VORs in the Elm pasture increased slightly from last week's initial estimate of 5.7cm (1300 lbs/acre) to 6.1cm (1450 lbs/acre).** The 24 day limit in Elm will be reached on June 30<sup>th</sup>.



- CPER headquarters received about a **half inch of rain this week** bringing out June total up to 0.94 inches. We are still about a half inch shy of the annual average this year.

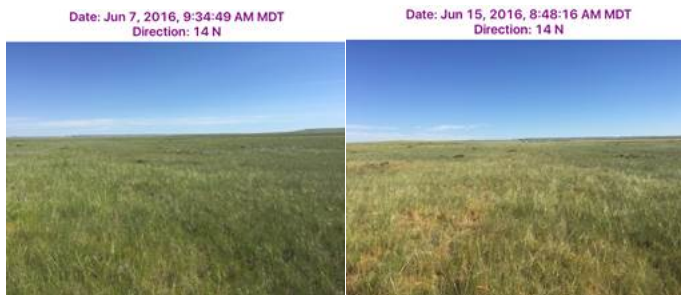


- There are **no health issues or mix-ups** to report this week with the AGM herd. We did, however, **weigh the steers from the grazing intensity experiment** and the weights (pounds/day) were as follows:
  - **Heavy Grazing: 4.48**
  - **Moderate Grazing: 4.55**
  - **Light Grazing: 4.68**

**Photos:**



Mickey demonstrates more ergonomic ways to measure vegetation.



Last week's (left) and this week's (right) photos of the Elm pasture.

On behalf of the USDA-ARS-Rangeland Resources Research Unit, I thank you all for your continued participation in this project.

Nick Dufek  
 Biological Science Technician  
 USDA-ARS-Rangeland Resources Research Unit